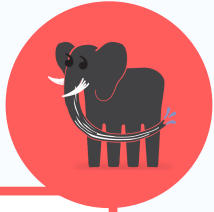


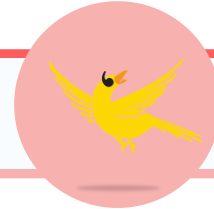


2 Years Old



UNDERSTANDING

- Understand between 300 - 700 words
- Follow instructions with 2 key words, "Get the little ball"
- Understand more Wh - questions including "Who..?" and "Can you" questions



EXPRESSION

- Use +60 words, but some may use up to 300 words
- Combine +2 words in a phrase "Mummy gone", "More water"
- Ask simple Wh- questions, "Where's Daddy?"
- Use grammatical markers:-ing, plural/s/, my/mine
- Use negation: "no", "not", "can't"



SPEECH SOUNDS

- Speech is 50% intelligible
- Use most vowel sounds and many consonant sounds:
- /p, b, m, t, d, n, k, g, 'ng', w, h, y, f/
- May delete and substitute sounds in words: leaving off the final sound in a word e.g. duck > "du"

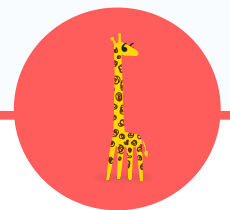
PLAY & SOCIAL SKILLS

- Pretend play sequences continue to develop
- Symbolic play - use object in place of another, e.g. small box as a phone
- Engage in parallel play and talk to self during play
- Participate in verbal turn taking
- Repeat actions that made someone laugh
- protest by saying "no"
- Use social words 'hi', 'bye', 'thank you'



RED FLAGS

- Relies on gestures over using words
- Does not use 2 word combinations
- Limited consonant production
- Compulsive labelling of objects
- Regression in language development



DON'T WAIT - LET'S EVALUATE!

- Contact us for a FREE 15 minute chat to determine if further investigation is recommended.

